

HOUSE AT 103-A

AHMEDABAD, GUJARAT

Plot Area: 4,700 sq ft

Built-up Area: 3,600 sq ft

Project Timeline: 2010 – 2012



AAKRUTI ARCHITECTS, AHMEDABAD

Partners: Dilip Patel, Toyam Patel, Tulna Patel

Project Team: Manika Chawra, Sneha Puri, Utsav Gupte

buildōfy®

© Skyboard, 2020. No part of this eBook may be reproduced or transmitted in any form or by any means, electronic or mechanical, including photocopying, recording or by any information storage and retrieval system, without written permission from the author.



Expressed in a stark color palette, this home set in Paldi, is sure to draw one's attention. With a few trees abutting the site and the planned greenspaces, stirs a sense of calmness in the house. Located as part of a cul-de-sac, the locale for the house boasts of a menagerie of flora and fauna including peacocks, monkeys, pigeons, etc., that make up for the lack of dense vegetation. The trees present around the house served as a strategic references for the vista from the building.

The house is for a small family of five and is planned as a G+1 structure with five bedrooms, two courtyards and a beautiful garden space. The orientation of the plot facing the south aided the possibility of a favourable air passage and sun path.

The spatial planning balances the need of privacy and public spaces, since the client has a large extended family, frequent visitors and social gatherings. The house is envisioned as one free open space that accommodates these need and offers a retreating experience to the family and the visitors.

The ground level is comprised of two bedrooms, one in the front and one at the rear. The living room is a bright and airy space with windows opening towards the garden and the entry porch. A double height courtyard sits at the centre of the house and serves as a passage for circulation of light and air flowing from the garden and the north courtyard.

A simple wooden wall panel dissects the living room from the central courtyard. The shaded verandah connecting the central courtyard and the garden becomes a space for indulging in reading or just sipping some coffee in the evening. The garden fringed with plantations softens the sturdy look of the house.

The rear courtyard is a spacious setting with built-in concrete benches and has the surrounding trees peeping inside. The dining and kitchen are placed beside the central court and receive sufficient natural light and air.

The first level is planned with a family lounge area, three bedrooms and a lower terrace. The roof of the verandah on the ground floor is utilized to create a lower terrace space. The bedrooms are kept minimal and have several openings which fill them with light and air.

Referential to the climatic conditions, the site and programmatic specificity, the house is conceived as a connected amalgamation of volumes and spaces that go unobscured, rendering a distinctive transparency. The volumetric massing, the plan configuration and the landscape features oscillate between taking references either from the vista or the surroundings such as the temple and existing trees. Certain architectural gestures like the raised plinth and the larger openings are a direct outcome of the climatic response.

Furthering the concept of free space, are also certain aesthetic decisions, for the interiors and materials. The furniture elements are the extended enclosures and connectors in the principal architectural intent of uninterrupted volumes. Singular material- plywood with different explorations in form and finishes, aids this thought also furthered by the flooring, where a central seamless floor extends out the interior to the landscape. The treatment of exterior facades is reflective of the overall responsive aesthetic, wherein each facade is a deliberation of the direction it faces, accentuated by the artwork in plaster.



Living room with minimal furniture



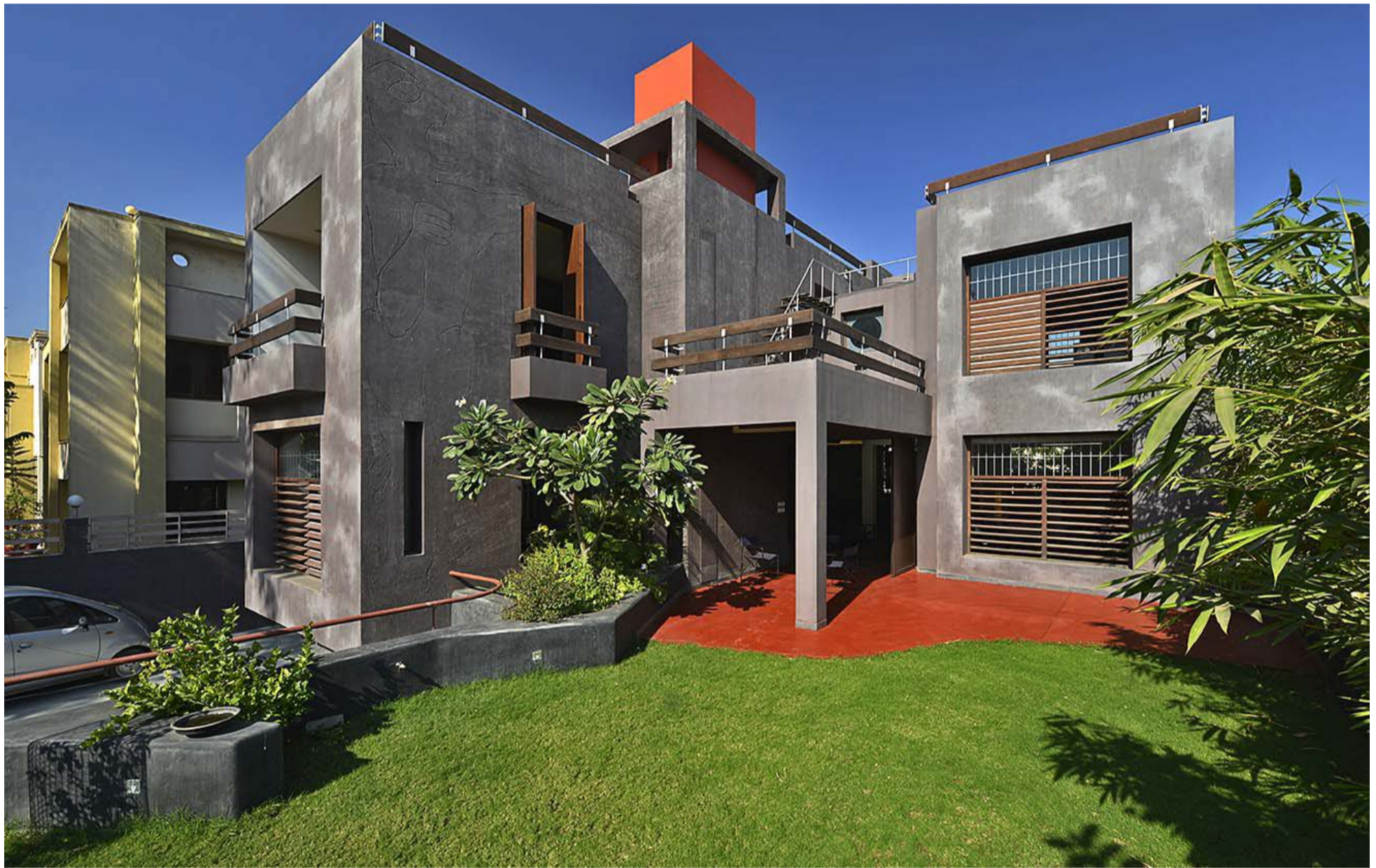
View of the living room and central courtyard



Wooden panel separates the living and central courtyard, and the subtle connection of interiors with the garden



Verandah space



A cozy garden space



Views of the north courtyard





Dining area with light furniture



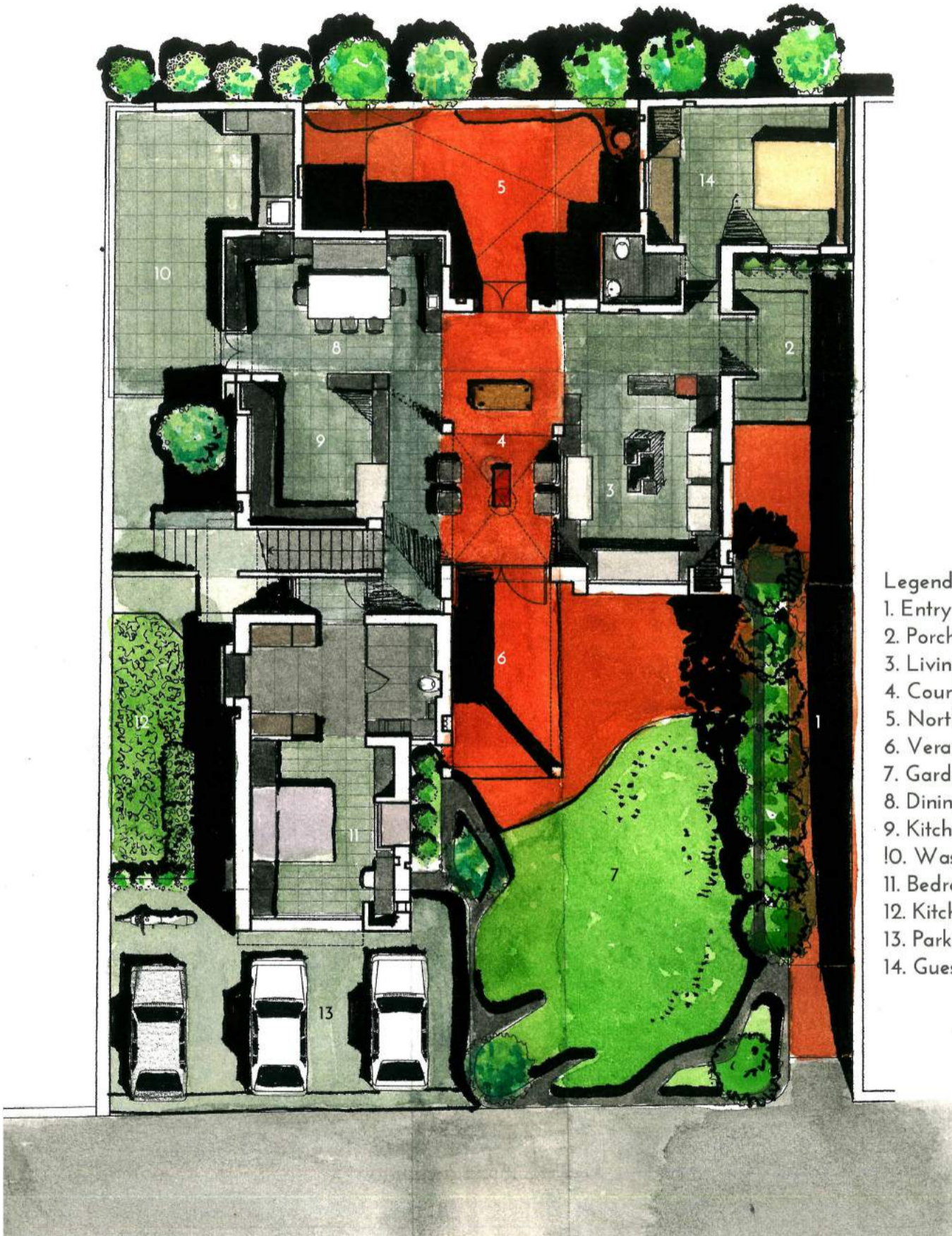
Kitchen space is a well-lit and airy space





Staircase leading to the first level





- Legend
- 1. Entry ramp
 - 2. Porch
 - 3. Living room (185 sq ft)
 - 4. Courtyard (85 sq ft)
 - 5. North courtyard (310 sq ft)
 - 6. Verandah (130 sq ft)
 - 7. Garden
 - 8. Dining area (180 sq ft)
 - 9. Kitchen (125 sq ft)
 - 10. Washyard
 - 11. Bedroom (250 sq ft)
 - 12. Kitchen garden
 - 13. Parking
 - 14. Guest bedroom (170 sq ft)

Ground Floor Plan



First floor family lounge with minimal furniture and decors



Bedroom space with a vertical window keeps the room pleasant



Spacious dressing area for the bedroom

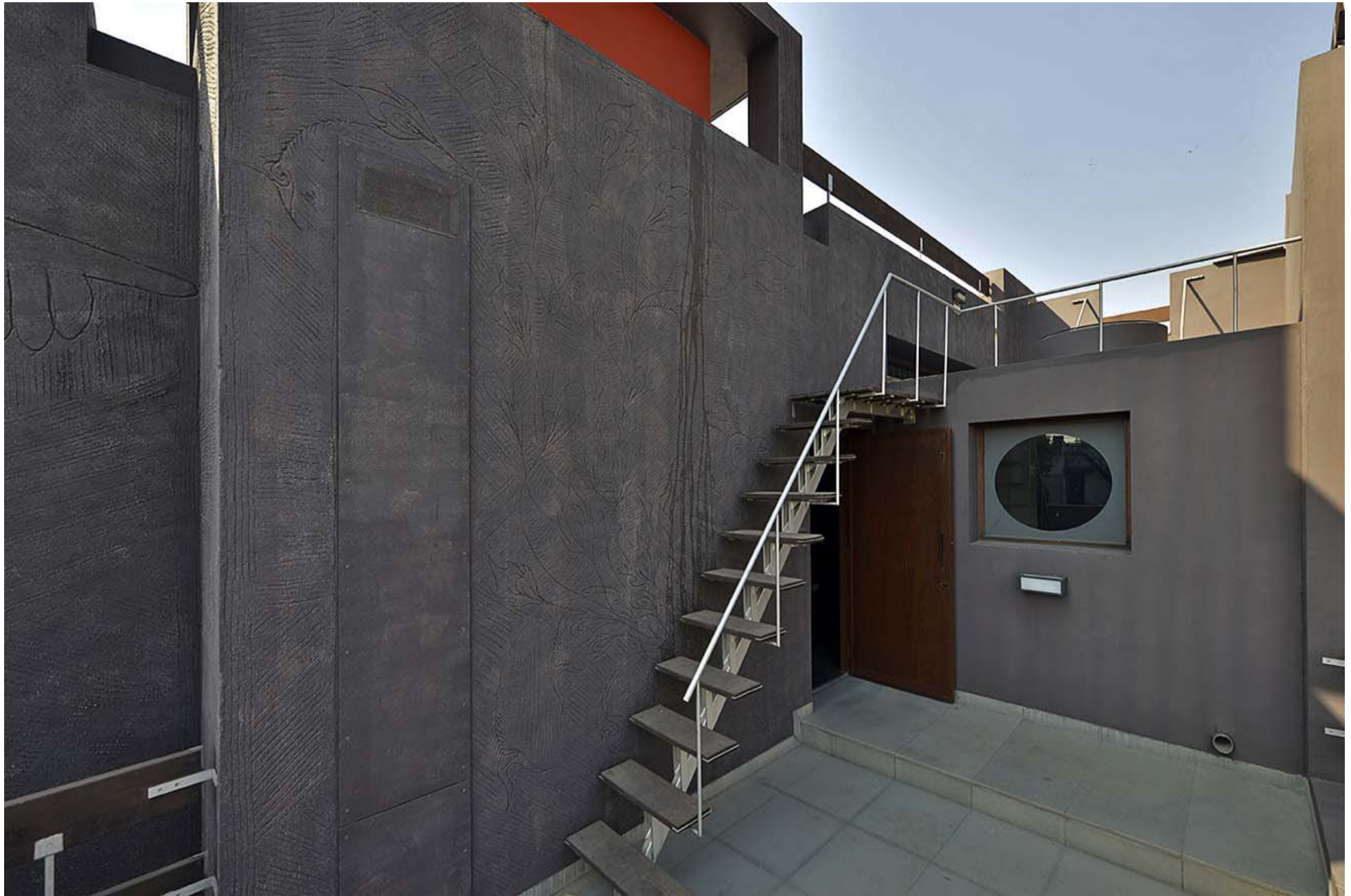


Passage overlooking the central courtyard and leading to the bedroom





Views of the other bedroom with a cozy study corner illuminated by windows



Lower terrace space with wall depicting artworks



Roof of the verandah used to form a terrace space



Bedroom opening towards the front



Simple furniture and design aesthetics create a comforting experience for the bedroom

.....



A nice balcony space overlooks the parking space and fetches views of the surrounding greens





Inscribed art on the walls lends an artistic touch to the house



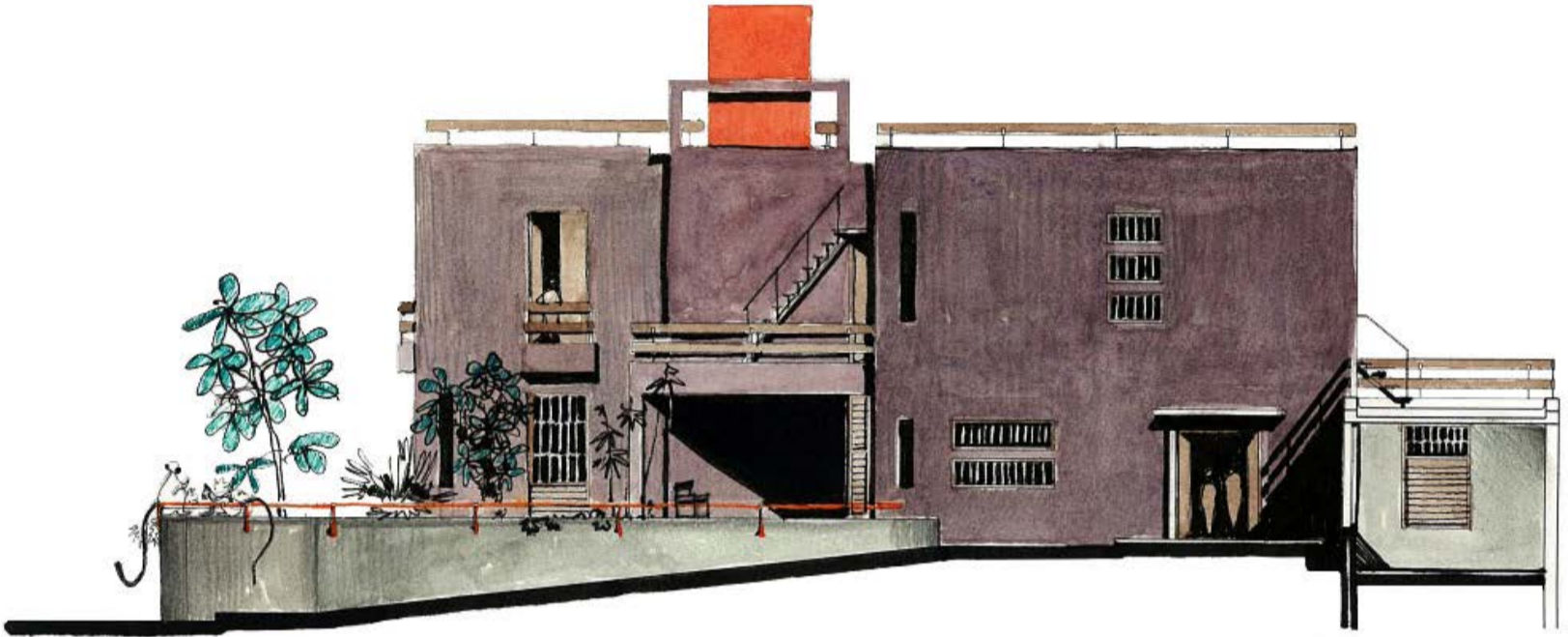
First Floor Plan



North Elevation



South Elevation



East Elevation



West Elevation



UNIQUE MATERIAL APPLICATIONS

Windows/Furniture: Designed and built in-house

Lighting: Assorted and sourced from Light Inside

Color: Asian Paints from KY Colour Co

Sanitaryware/Bath Fittings: Jaquar from La Decore

Furnishing: Kombination

Hardware: Electroplating and polishing works

Ply: Korindo Ply

Laminates: Signature Laminates Pvt Ltd

Air Conditioning: Daikin, Mitsubishi from President Refrigeration

Flooring: Vraj Marble & Stone

KEY CONTRIBUTORS

Structural: Ameer Associates

Civil: Maitri Enterprises

Landscape: Iora Studio

Plumbing: Bharat Chauhan

HVAC: President Refrigeration

PMC: Team PMC

Artwork in plaster: Vyom Mehta

PHOTO CREDITS

Dinesh Mehta