

HOUSE AROUND A COURTYARD

AHMEDABAD, GUJARAT

Plot Area: 47,700 sq ft

Built-up: 18,500 sq ft

Project Timeline: 2016 – 2019

Project Cost: INR 5,000 per sq ft



AAKRUTI ARCHITECTS, AHMEDABAD

Partners: Dilip Patel, Toyam Patel, Tulna Patel

Project Team: Urnit Kaur Khalsa, Tushar Jadav, Jigar Mistry

buildōfy®

© Skyboard, 2020. No part of this eBook may be reproduced or transmitted in any form or by any means, electronic or mechanical, including photocopying, recording or by any information storage and retrieval system, without written permission from the author.



This spatially luxurious urban home in Ahmedabad, dissolves nature with the built form. Belonging to a family of four who have resided in an urban setting hitherto, wanted a peaceful abode, with a sense of oneness with nature. Set on a plot of 47,700 sq ft the house unfolds itself as a series of interconnected spaces laid out in an open plan format. From the entrance, one is touched by the tranquility and influence of the greenery and waterbody on site.

The brief slowly transformed into a complex design challenge of creating a sequence of private and social spaces that addressed their individual aspirations as well as create pockets of open spaces within the built volume. The house is designed with five bedrooms, formal living room, TV room, courtyard, dining room, verandah sit-outs, kitchen, recreation room, lounge, barbecue area, temple, gymnasium, terrace sit-outs, and other service spaces.

The built form is articulated to open out to the expanse of a large garden on the north, and other pockets of greens around. The outdoor spaces are imagined as a series of open or intimate pockets that house different possibilities of interaction for the family- sometimes a dinner with friends, or a barbecue with cousins, or simply an evening chai on the swing. North-south spine of the house through the courtyard space connects the internal and external spaces, thus blurring the barrier between the two.

The first floor also has its share of terraces as outdoor pockets on the north overlooking the lawn, and on the southwest. The recreation room and the lounge open out to this terrace, which becomes a venue for a lively evening of entertainment, and to enjoy the evening breeze.

Every space in the house speaks in a unified earthy tone. The material palette is kept minimal yet rich that keeps the spaces durable and energetic at the same time. The concrete elements are left exposed- in slab bottoms, lintel bands and external elevation of the house.

All openings are designed to respond to the harsh weather with a combination of louvers for ventilation, and glass sliding for view and light. They are deep set under a continuous lintel band that acts as a shading device.

The interiors are characterized by high, exposed concrete slabs and each space is an exploration in varied materials, finishes, compositions of elements, generously complemented with artwork and sculptures that extend the core personality of its user. Traditional touch is felt by the varying stone textures of *Kota*, *Jaisalmer* sandstone and patterned terrazzo floors are offset against stained teak, polished MDF, warm teak veneer and stucco walls.



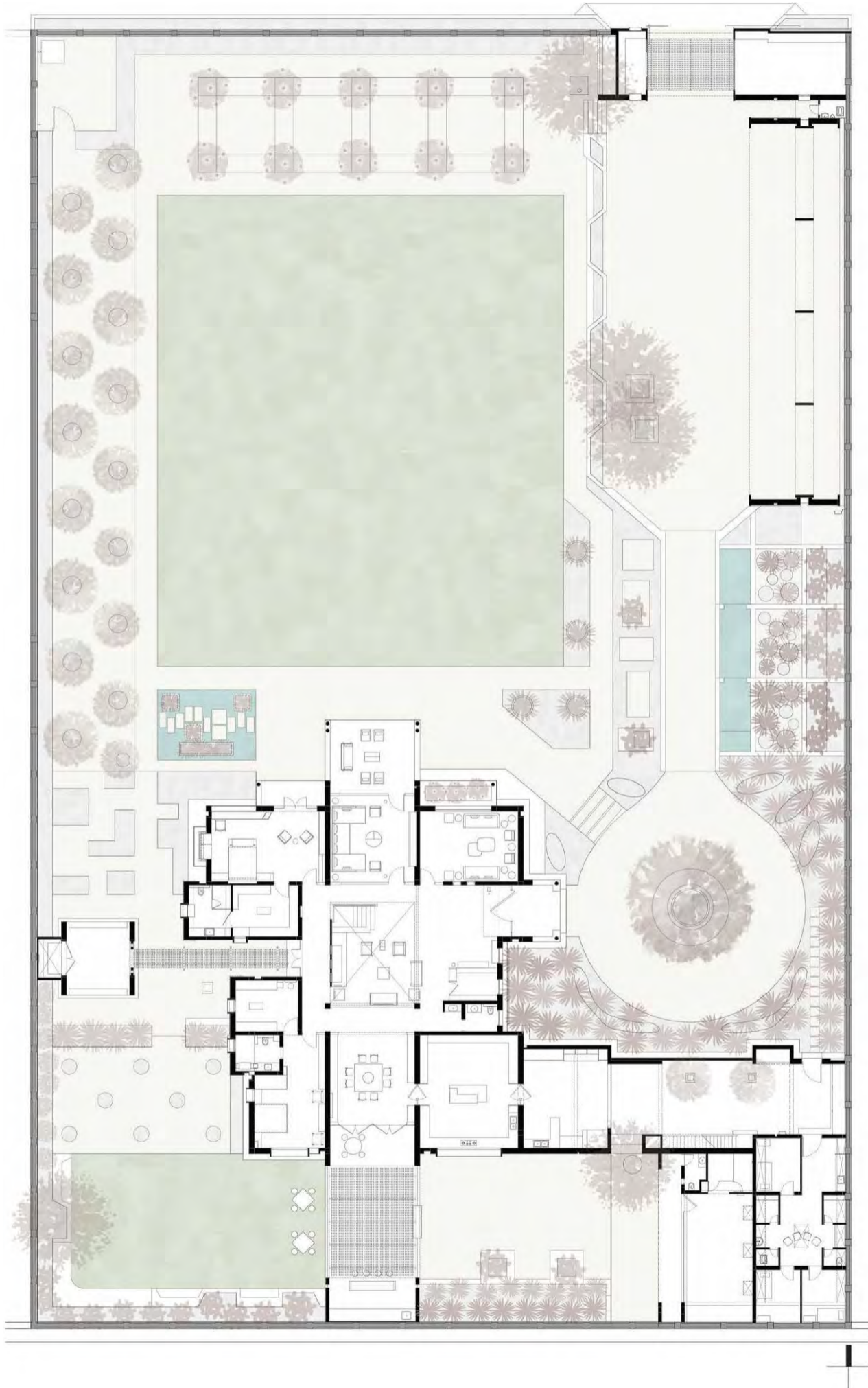
View of the existing trees from the main gate



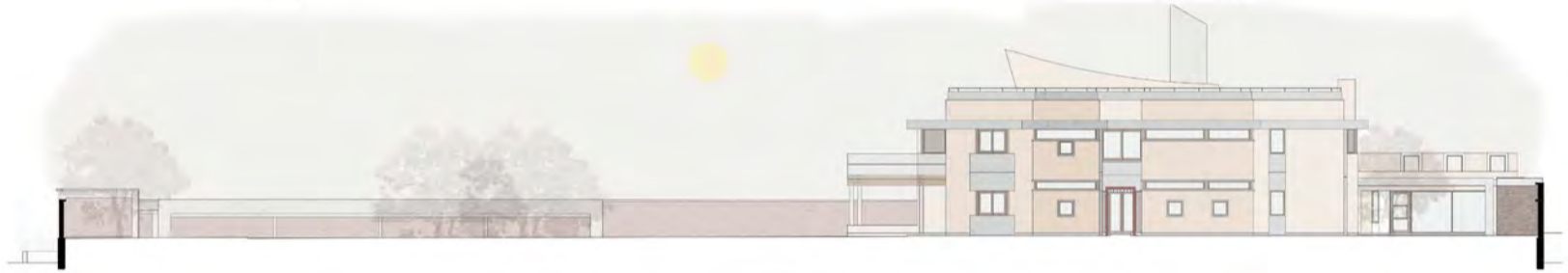
View of waterbody along the driveway



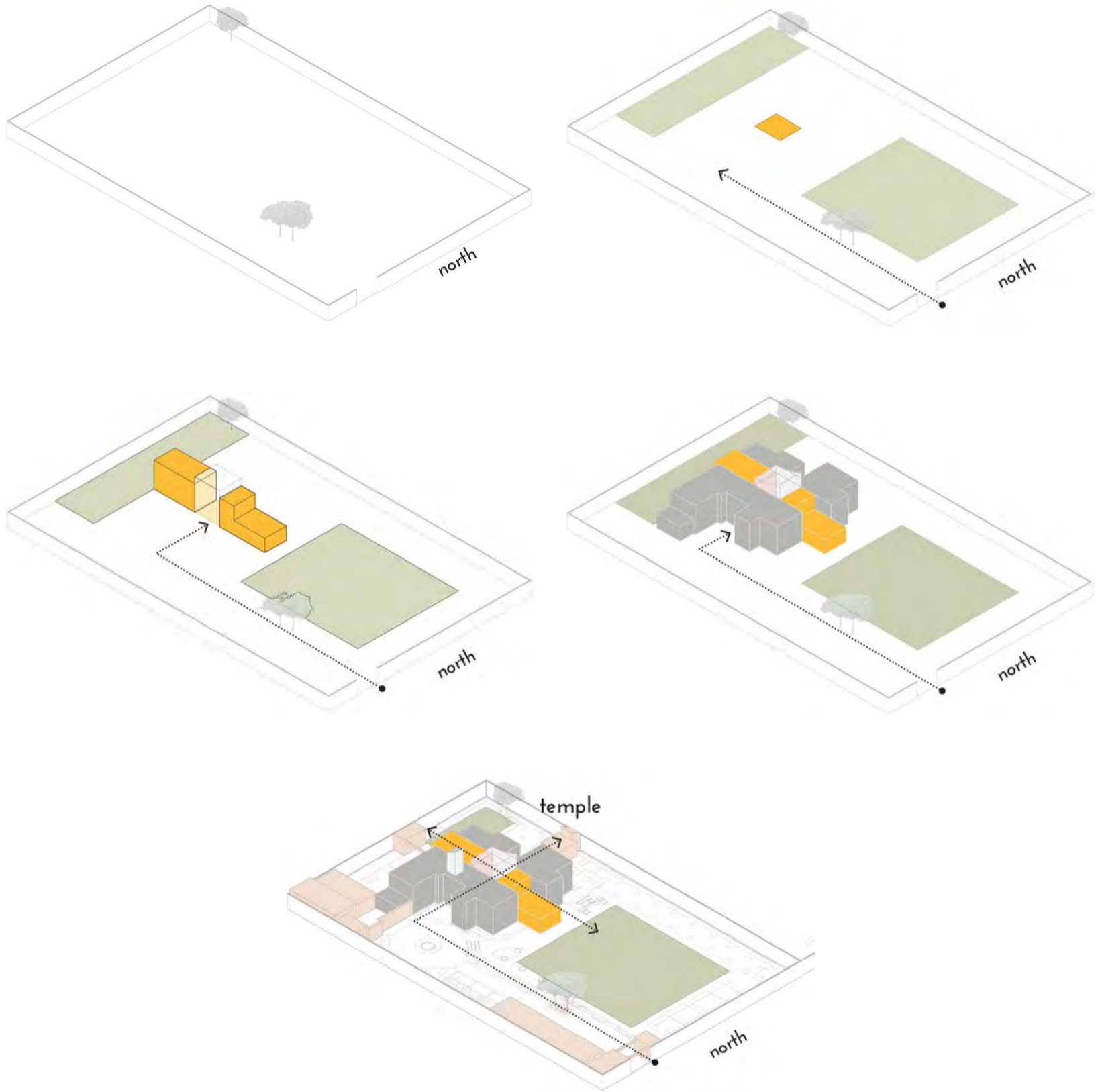
Evening view of the house and waterbody



Site Plan



Elevations



Isometric Plan



Views of the entrance porch



Internal foyer space



Enticing view of the internal courtyard with formal seating





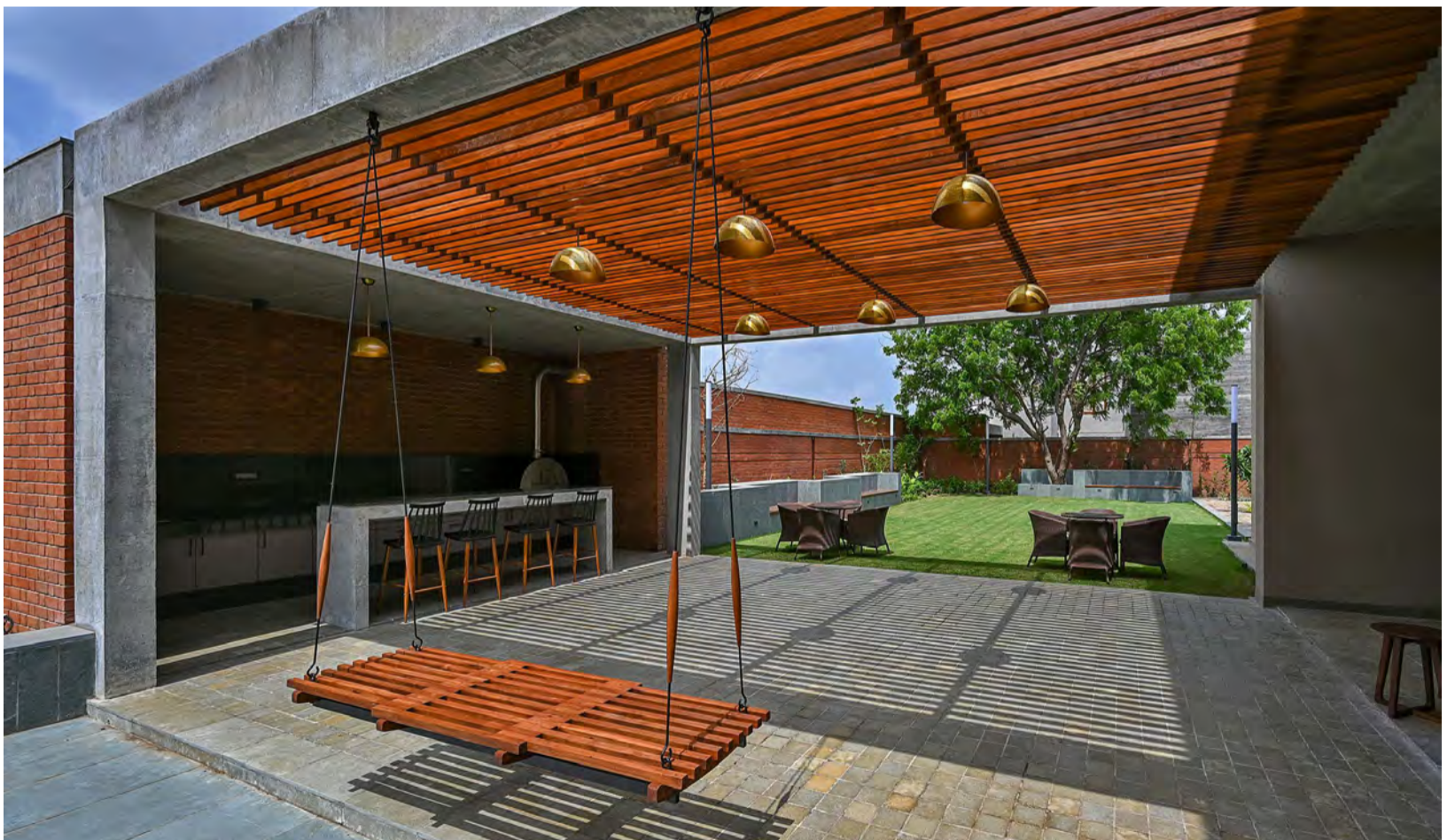
Drawing room highlighted with wooden furniture and patterned flooring



Views of the living room with nuances of greens and blues



Naturally lit dining area



Views of the outdoor barbeque area with a lovely shadow formed by the shading screen above



Views of the landscaped area



North verandah connecting to the lawn



A cozy master bedroom with minimal interiors



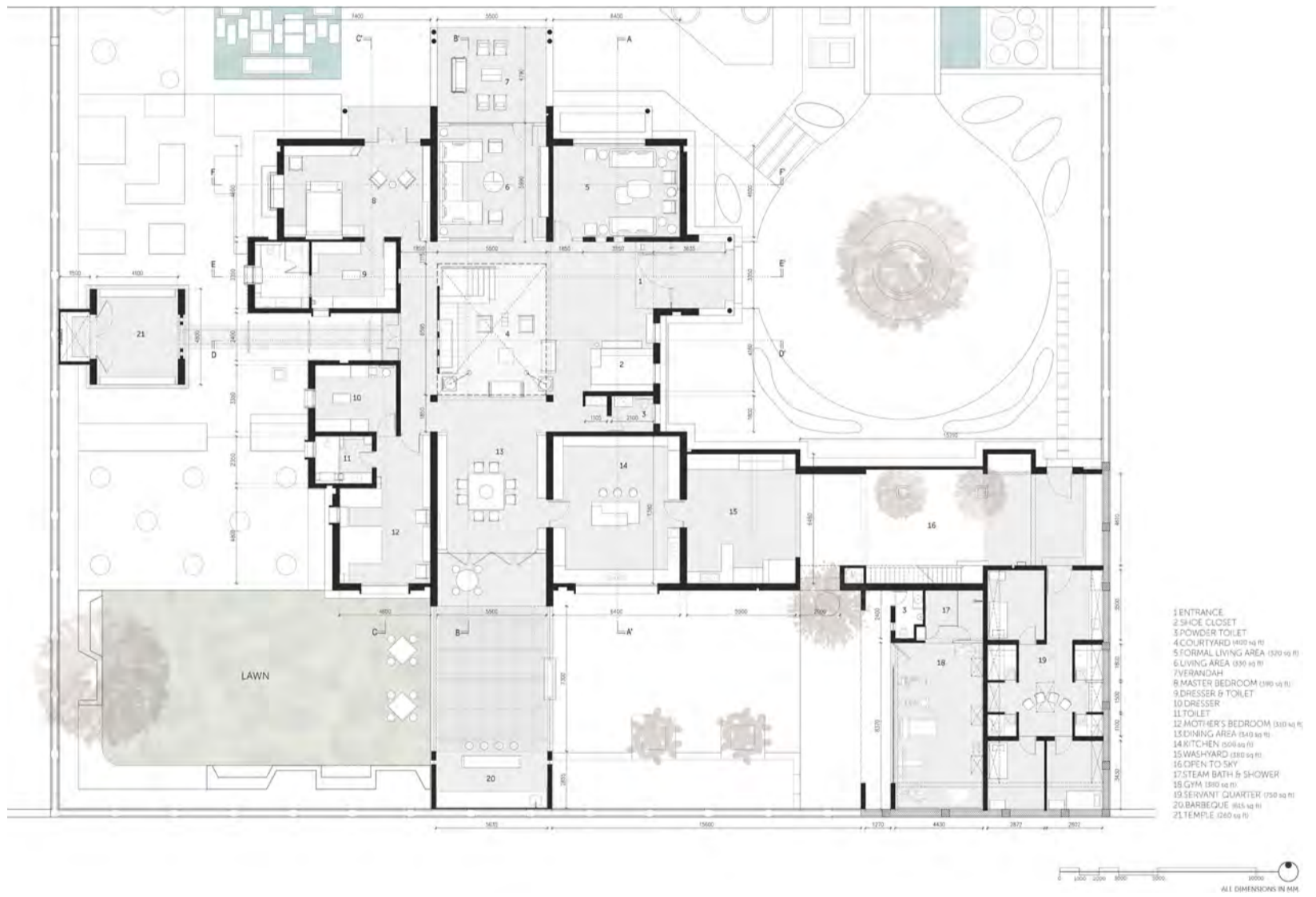
View of the double height court and staircase leading to the first level



View from the first floor passage



North terrace with a swing and concrete planters



Ground Floor Plan



Bright and lively lounge area on first floor



Perfection of patterns and geometries make a design statement for the daughter's bedroom



Daughter's bathroom is an eclectic space with a rustic and earthy appeal



The partition in son's bedroom between the bed and the internal lounge seating, makes it a comfortable space



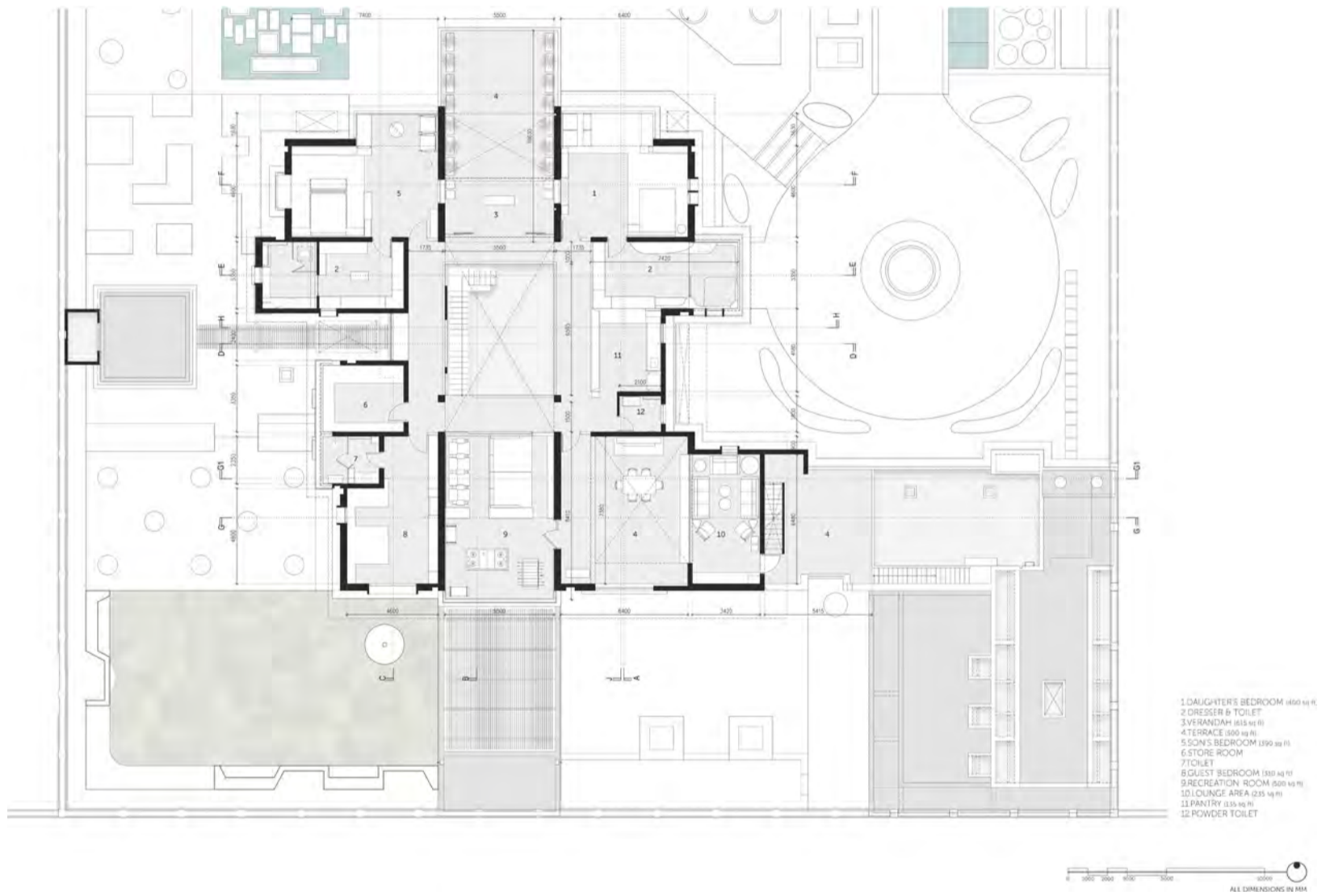
Views of the home theater space



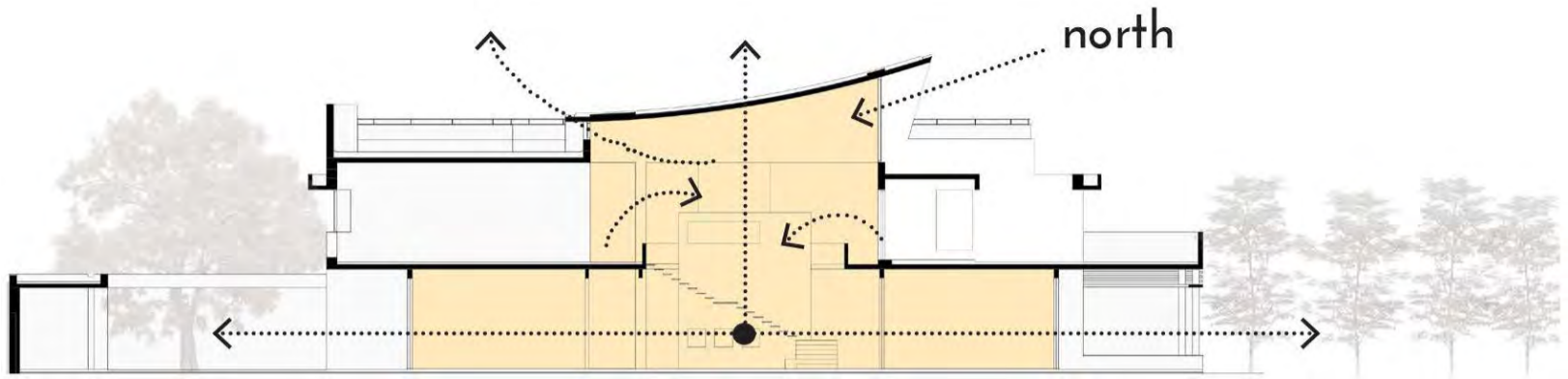
Terrace space on the south-west



View of the waterbody and the robust façade



First Floor Plan



Section Diagram



Section AA'



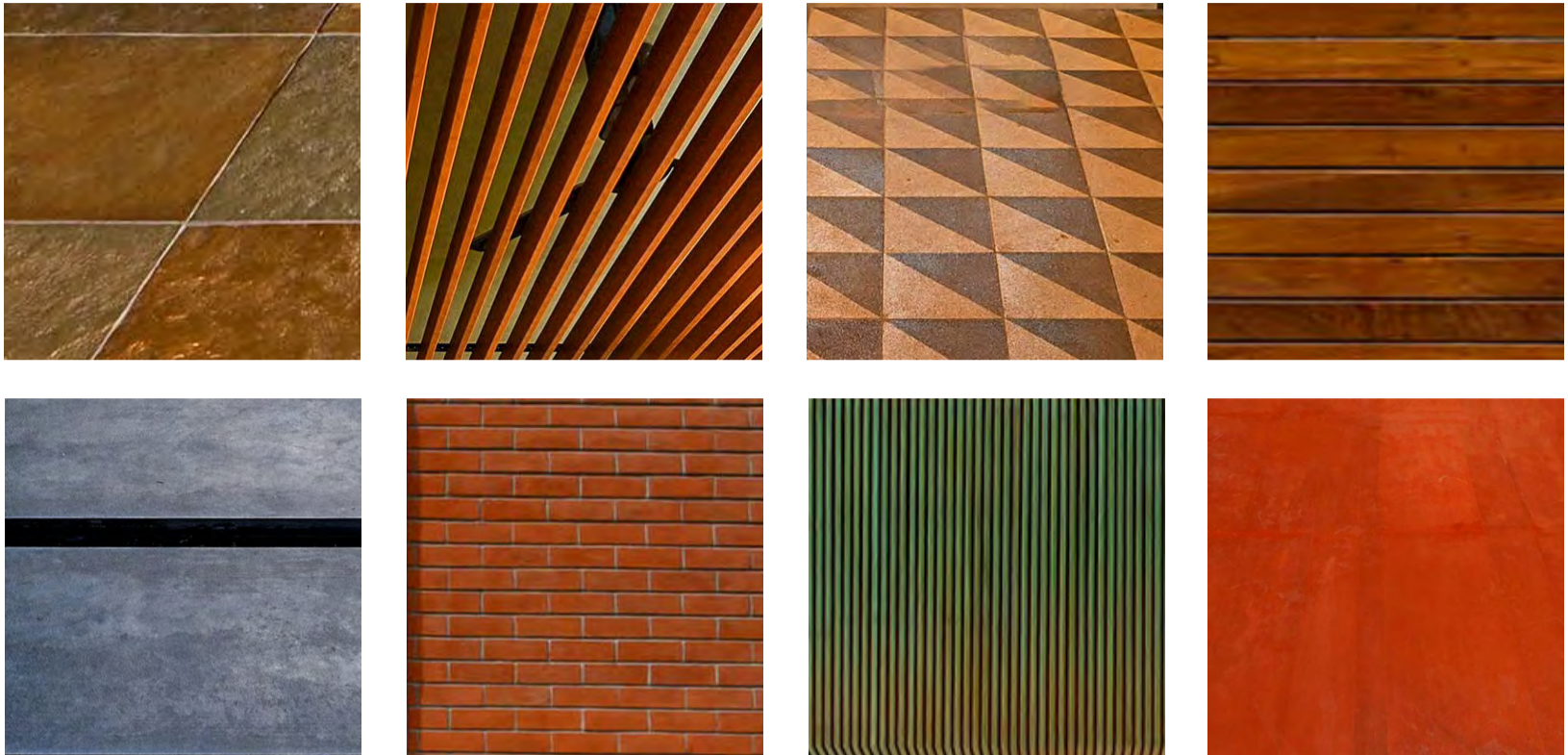
Section BB'



Section CC'



Section DD'



UNIQUE MATERIAL APPLICATIONS

Façade Texture Coating: Heritage Surface Textures from Bakelite Hylam Ltd, Secunderabad

Windows: Torfenster India Ltd, Bengaluru

Tiles: Kajaria from Refine Floors

Lighting: Assorted from various sources from Casabella, Light Inside

Color: Asian Paints from KY Colour Co

Sanitaryware/Bath Fittings: Jaquar from Patel Sanitary

Furniture: Assorted from various sources from Casabella

Furnishing: D'Décor from Dynamic Living

Hardware: Hafele from Networth Kitchens Lounge, Electroplating and Polishing Works

Ply: SRG from Limbani Traders

Veneer: Decowood (Greenlam) from Limbani Traders

Laminates: Signature Laminates Pvt Ltd

Wooden Flooring: Havwood UK from Windoor Marketing

Security: HIK vision from All Automatic

Air Conditioning: Daikin, Mitsubishi from President Refrigeration

Home Automation: Rako from All Automatic

Stone - Flooring: Vraj Marble & Stone

KEY CONTRIBUTORS

Structural: Ashish Bhavsar

Civil: Ajay Patel

Electrical: Essential Electrical Services

Landscape: Iora Studio

Plumbing: Jaycon Consultants

HVAC: President Refrigeration

PMC: Team PMC

Acoustics: Saint Gobain Gyproc

PHOTO CREDITS

Dinesh Mehta